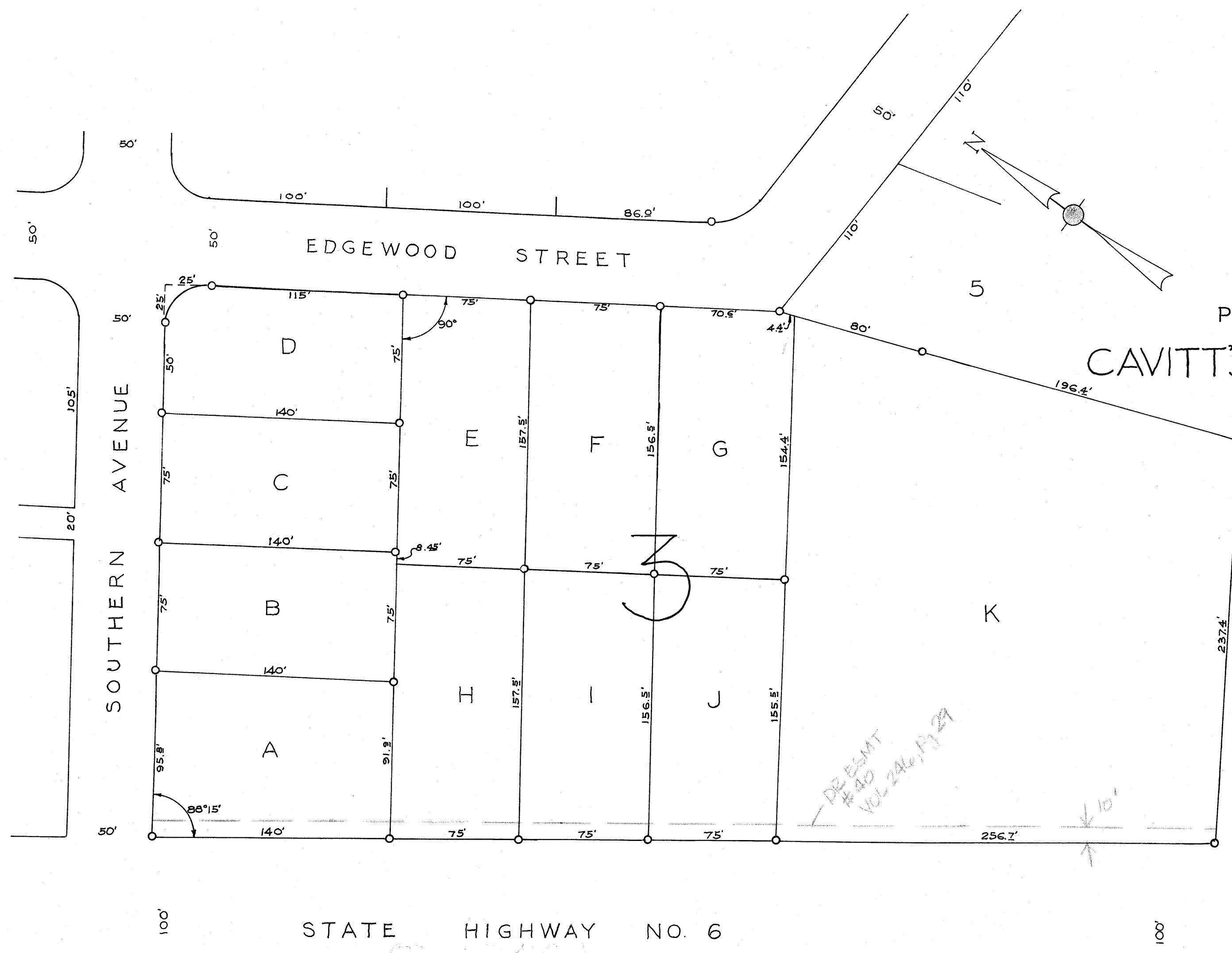


on base 7/20/60  
WD



BONEY'S  
RESUBDIVISION  
OF A

PORTION OF BLOCK 3

CAVITT'S WOODLAND HEIGHTS  
NO. 2

BRYAN, TEXAS  
SURVEYED BY J.A. ORR 1948  
OWNER: W.A. BONEY

SCALE: 1" = 50'

D.R.: VOL. 134, PAGE 507  
APR. 26, 1948

DEESMT  
#40  
VOL. 246, P. 29

NOTE: ALL CIRCLED POINTS ARE MONUMENTED IN CONCRETE.